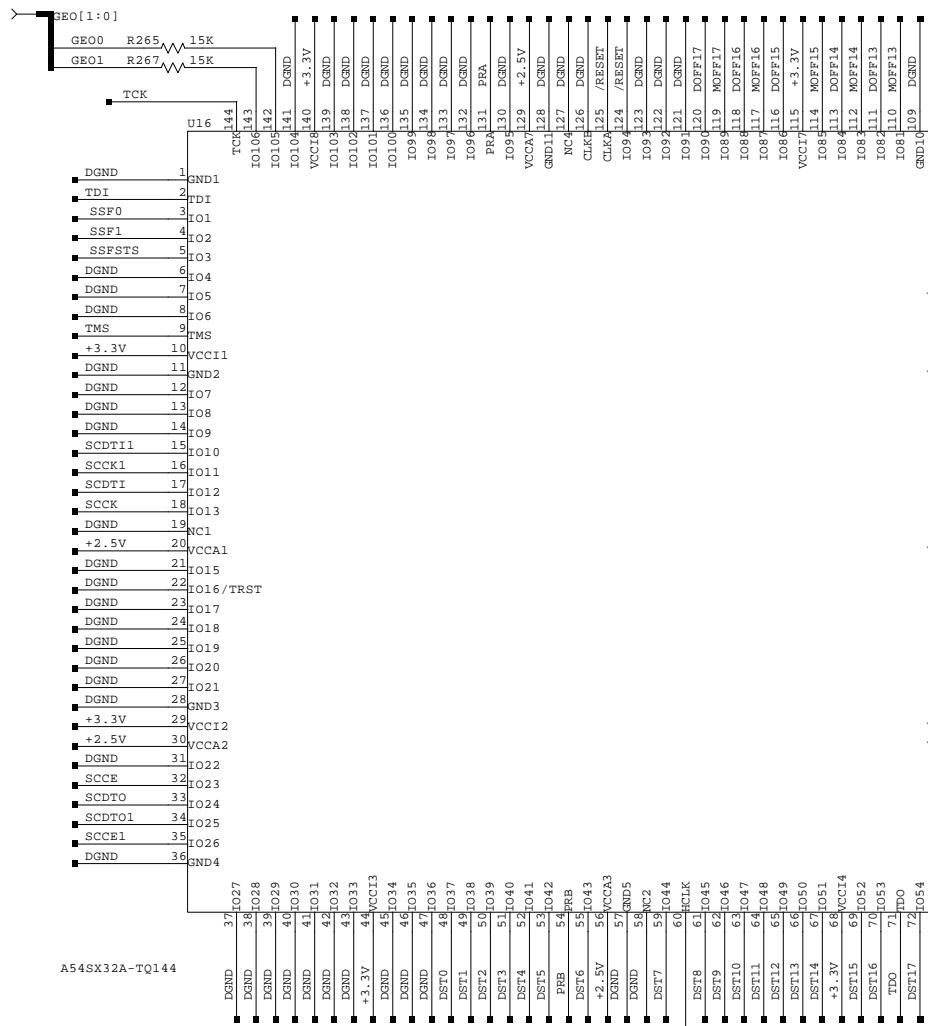


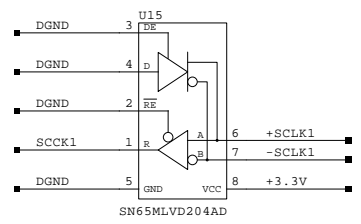
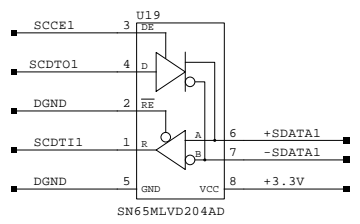
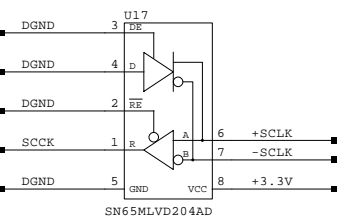
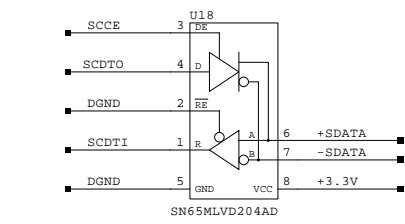
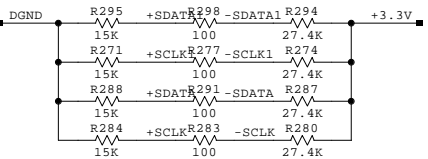
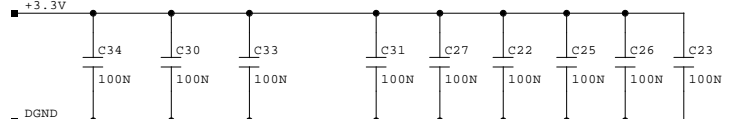
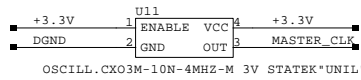
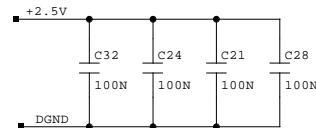
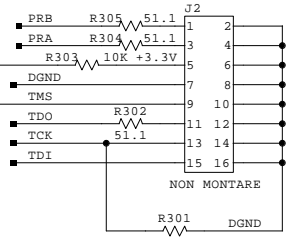
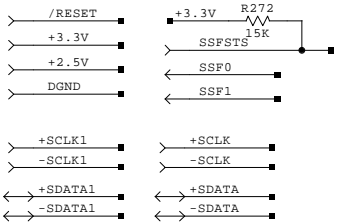
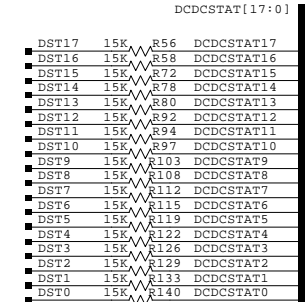
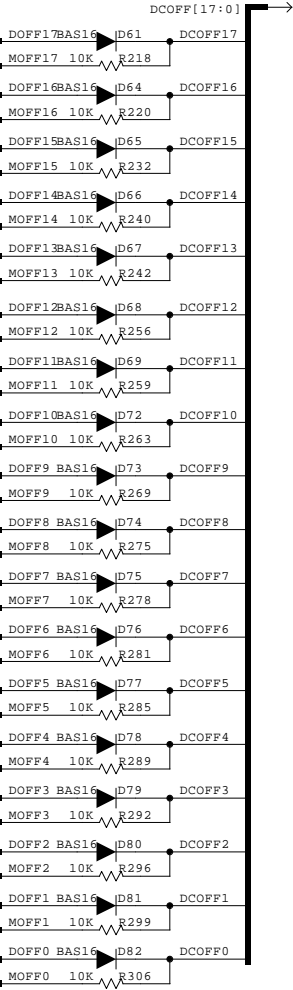
**CAEN**

MODEL: S9011 - TPD ELECTRONICS	
TITLE: BLOCK DIAGRAM	
DRAWING NUMBER: BS90110315AB	REV. 1
FILENAME: S9011MAIN	
DATE: 2-24-2004_12:15	SHEET: 1 of 7

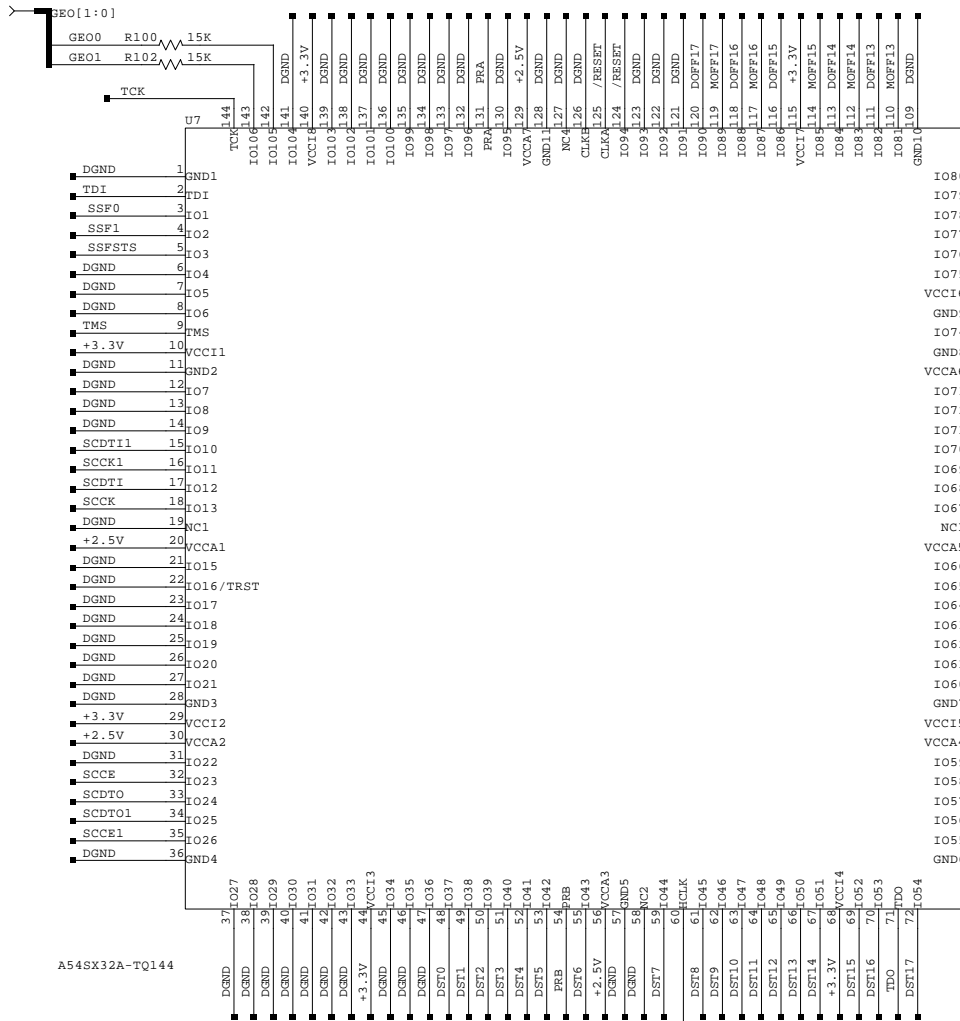


A54SX32A-TQ144

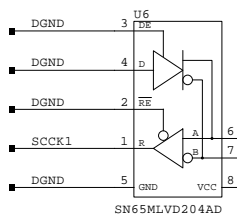
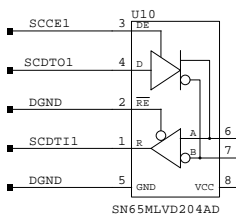
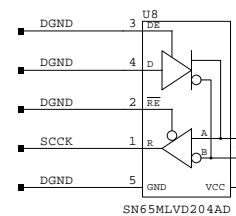
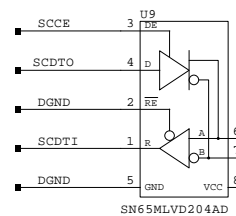
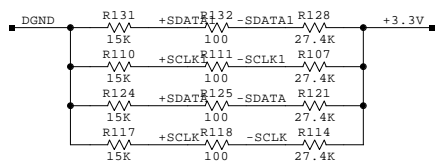
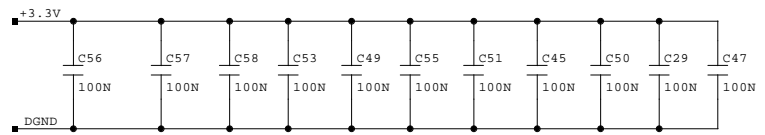
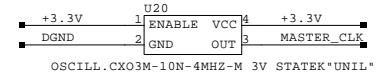
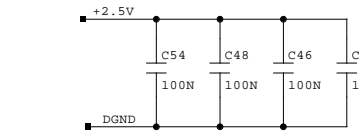
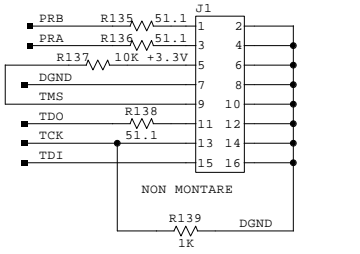
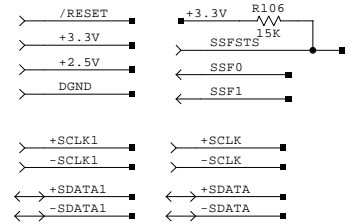
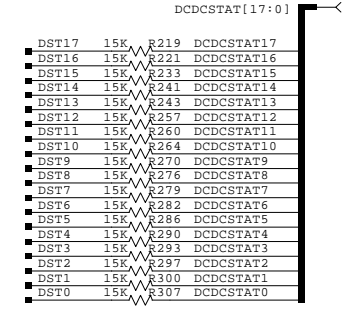
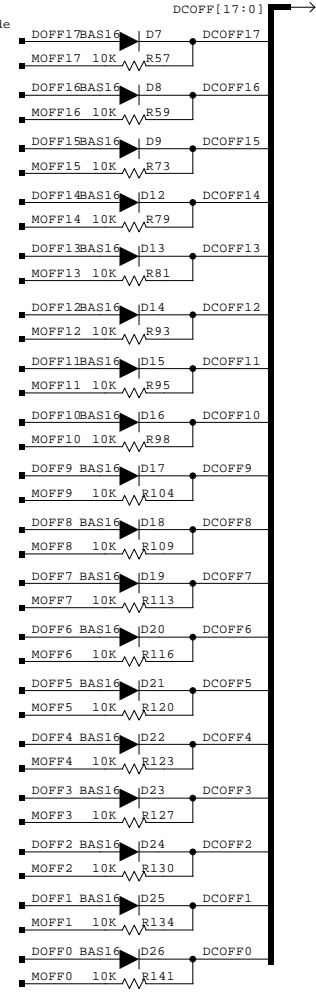
Don't mount the diode  
to turn off its own  
+5V DC/DC converter



<b>CAEN</b>	
MODEL: S9011 - TPD ELECTRONICS	
TITLE: SLOW CONTROL FPGA	
DRAWING NUMBER: BS90110315AB	REV. 1
FILENAME: S9011FPGA_0	
DATE: 2-24-2004_12:23	SHEET: 2 of 7

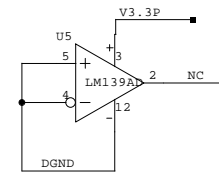
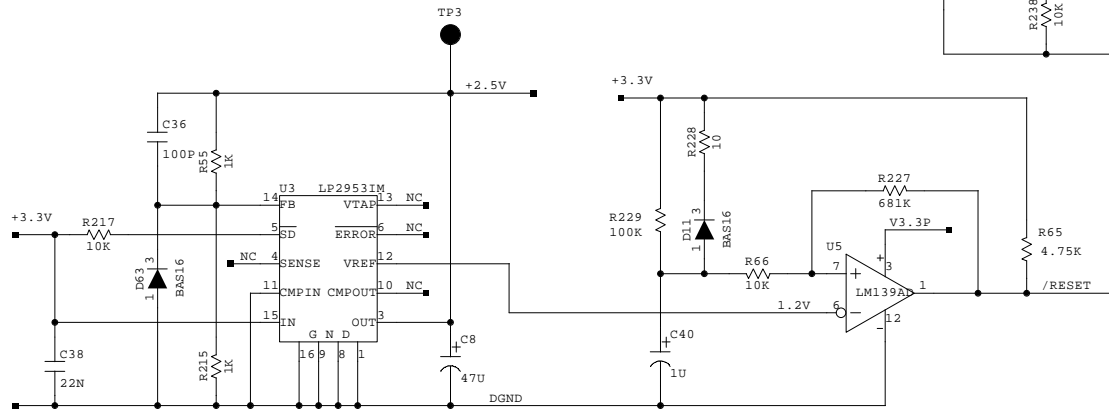
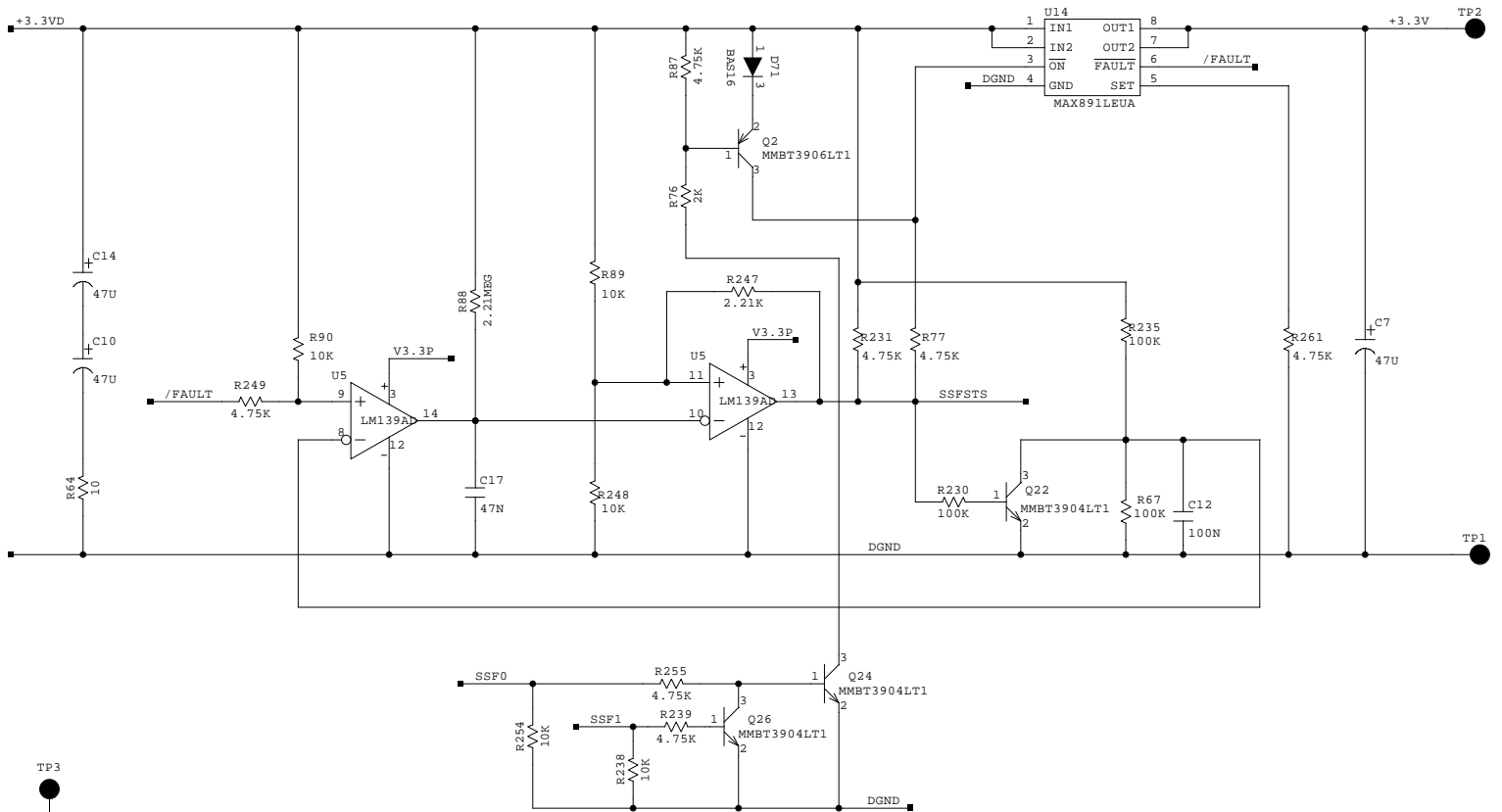
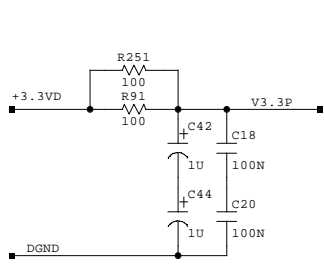


Don't mount the diode to turn off its own +5V DC/DC converter



<b>CAEN</b>	
MODEL: S9011 - TPD ELECTRONICS	
TITLE: SLOW CONTROL FPGA	
DRAWING NUMBER: BS90110315AB	REV. 1
FILENAME: S9011FPGA_1	
DATE: 2-24-2004_12:19	SHEET: 3 of 7

- > +3.3VD +3.3V PRIMARY POWER SUPPLY
- < +3.3V +3.3V FPGA I/O POWER SUPPLY
- < +2.5V +2.5V FPGA CORE POWER SUPPLY
- < DGND DIGITAL GROUND
- < /RESET DIGITAL SECTION RESET
- > SSF0
- > SSF1
- < SSFSTS



**C.A.E.N.**

MODEL: S9011- TPD ELECTRONICS

TITLE: SSF & LINEAR REGULATOR

DRAWING NUMBER: BS90110315AB

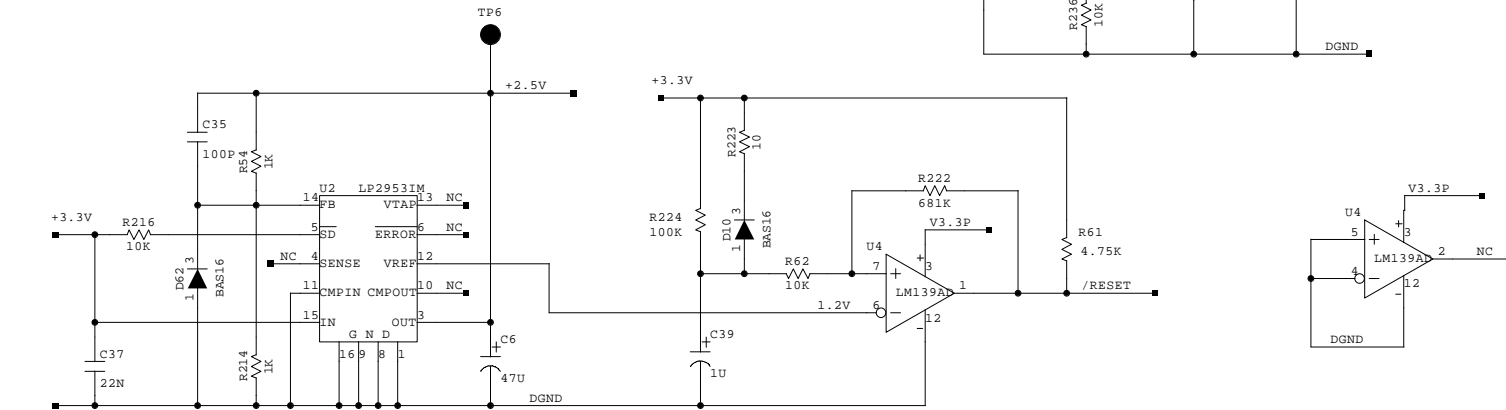
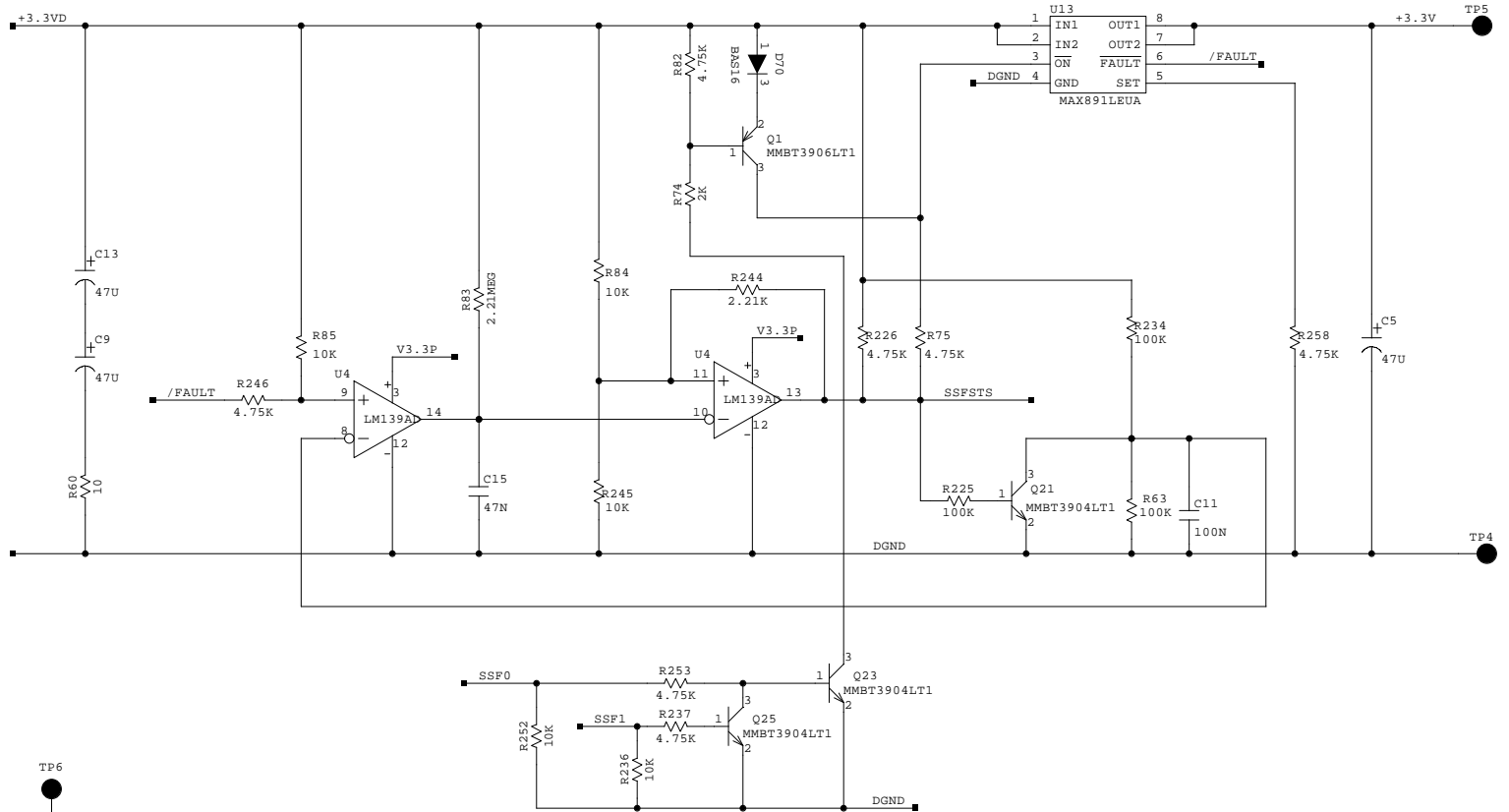
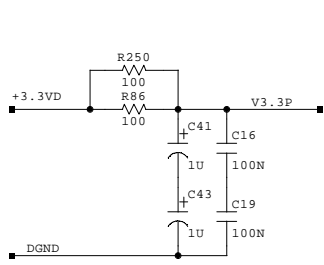
FILENAME: S9011SSF\_RL\_0

DATE: 2-24-2004\_12:15

SHEET: 4 of 7

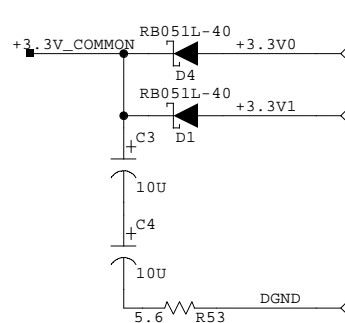
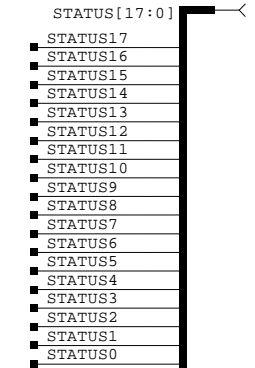
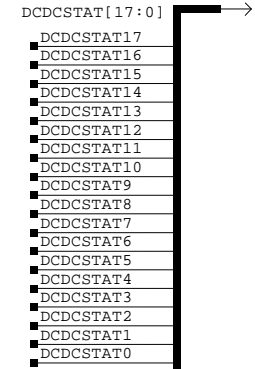
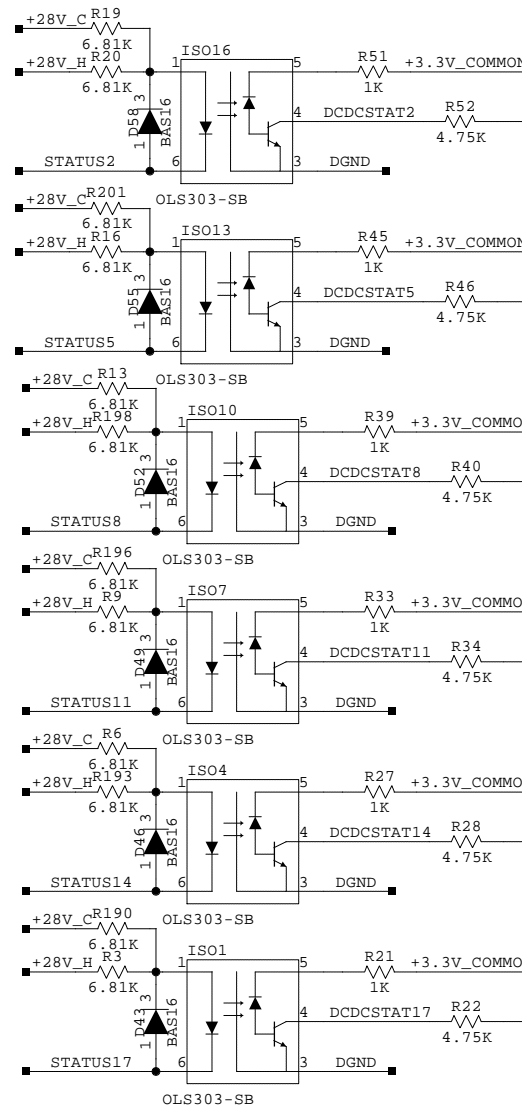
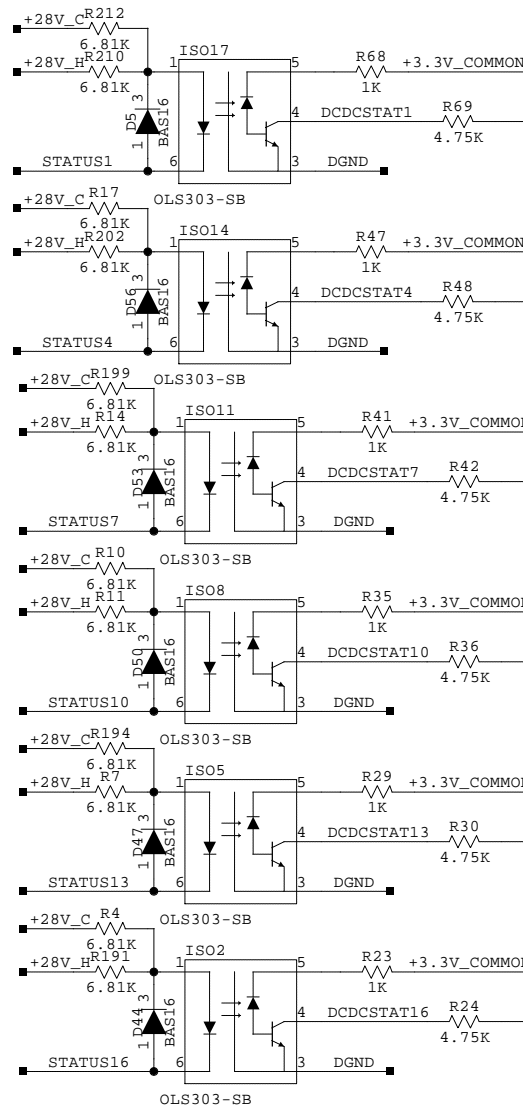
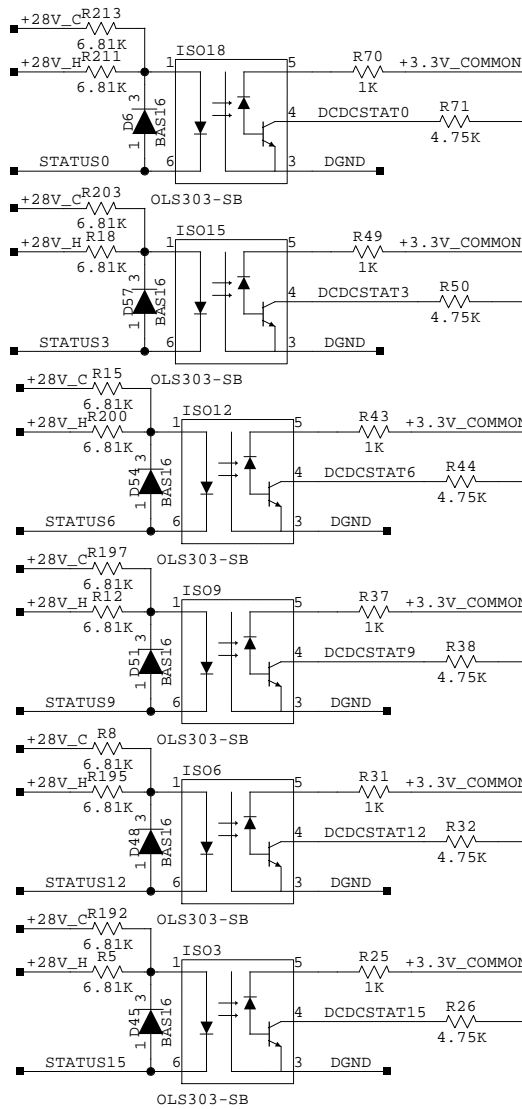
REV.  
1

- > +3.3VD +3.3V PRIMARY POWER SUPPLY
- < +3.3V +3.3V FPGA I/O POWER SUPPLY
- < +2.5V +2.5V FPGA CORE POWER SUPPLY
- < DGND DIGITAL GROUND
- < /RESET DIGITAL SECTION RESET
- > SSF0
- > SSF1
- < SSFSTS



**CAEN**

MODEL: S9011- TPD ELECTRONICS	
TITLE: SSF & LINEAR REGULATOR	
DRAWING NUMBER: BS90110315AB	REV. 1
FILENAME: S9011SSF_RL_1	
DATE: 2-24-2004_8:52	SHEET: 5 of 7

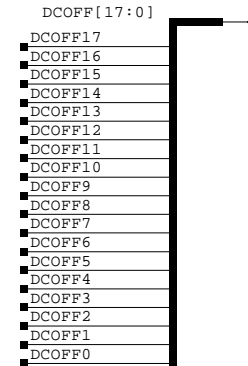
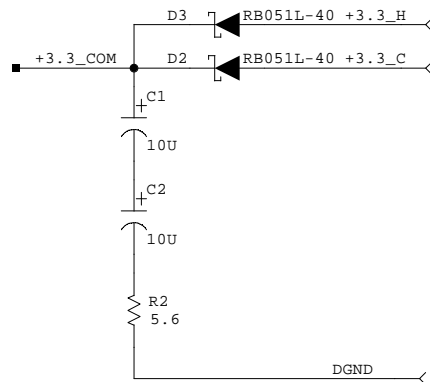
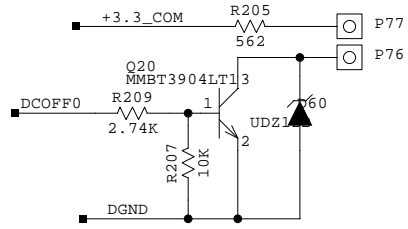
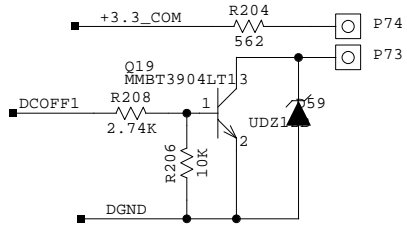
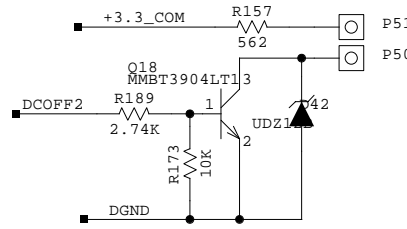
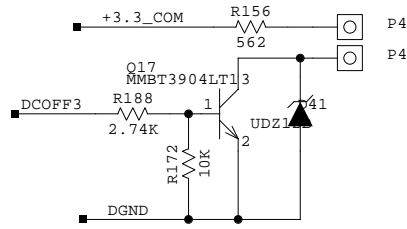
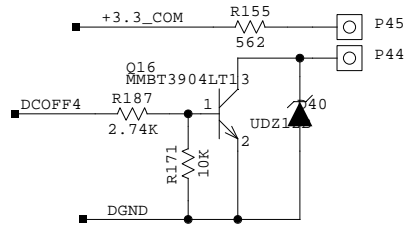
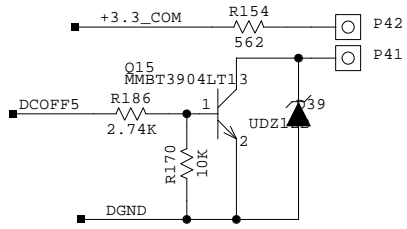
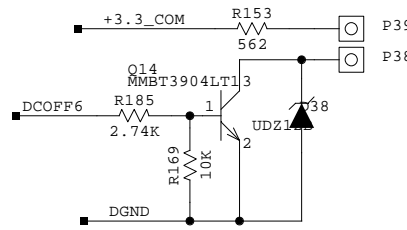
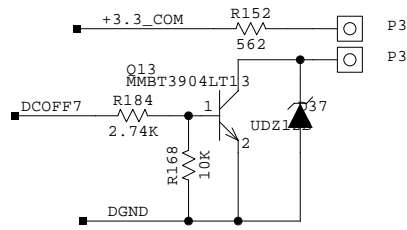
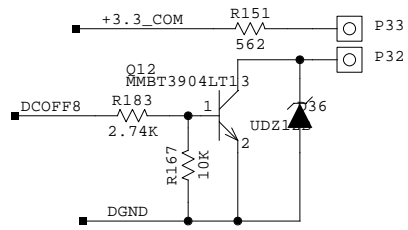
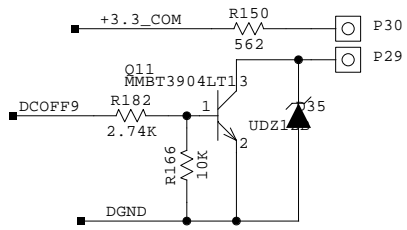
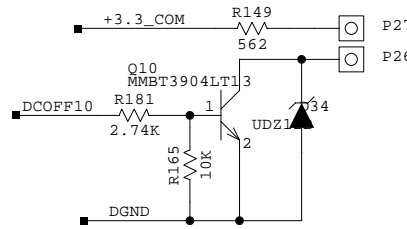
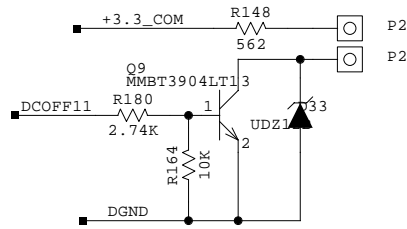
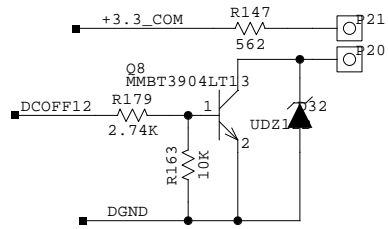
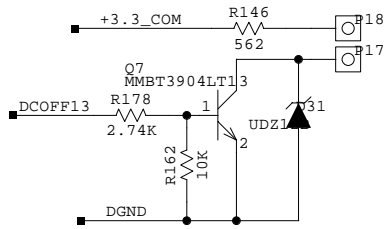
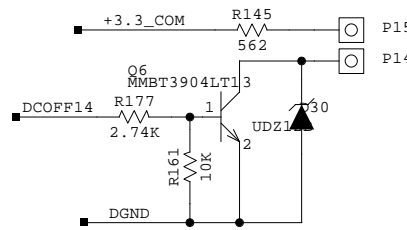
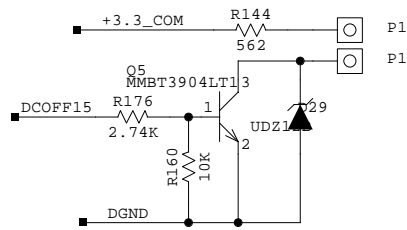
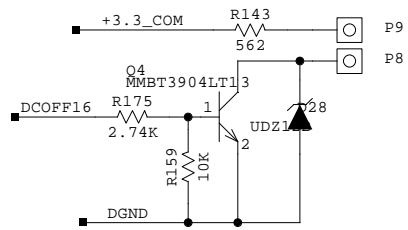
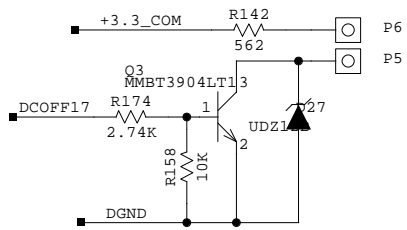


+28V\_C  
+28V\_H

+28V is a current link and does not require a filter capacitor



MODEL: S9011 - TPD ELECTRONICS	
TITLE: OPTOCOUPERS	
DRAWING NUMBER: BS90110315AB	REV. 1
FILENAME: S9011OPTO_0	
DATE: 2-24-2004_12:15	SHEET: 6 of 7



<b>C.A.E.N.</b>	
MODEL:	S9011 - TPD
TITLE:	DC/DC OFF CONTROL DRIVER
DRAWING NUMBER:	BS90110315AB
FILENAME:	S9011BJT_OFF
DATE:	2-24-2004_12:15
SHEET:	7 of 7

REV.  
1