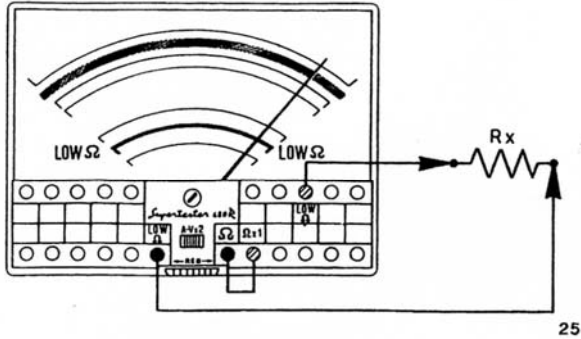
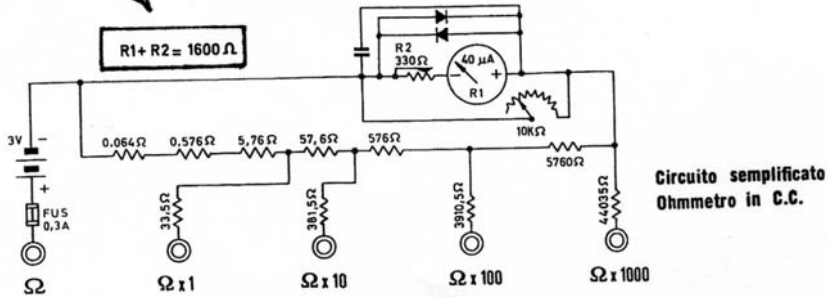


Schema semplificato Ohmetro per bassi valori.

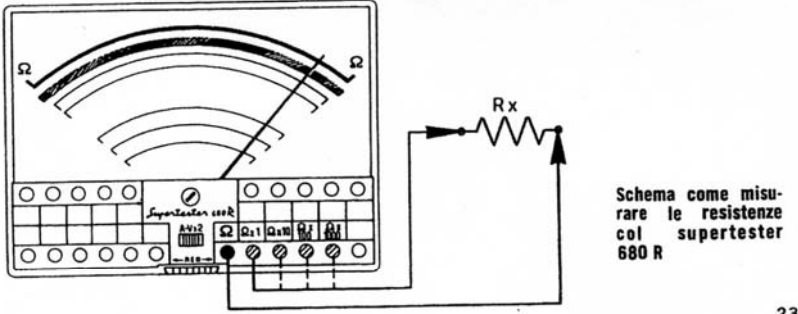
Schema come misurare le resistenze di basso valore col Supertester 680 R



25

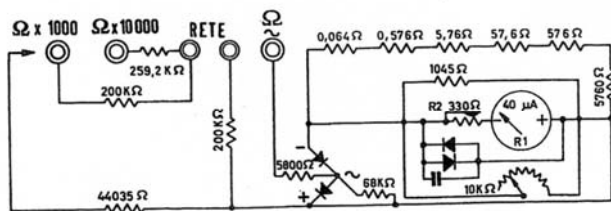


Circuito semplificato Ohmetro in C.C.

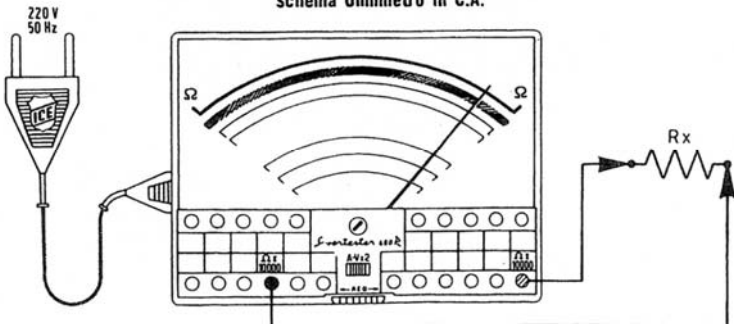


Schema come misurare le resistenze col supertester 680 R

23



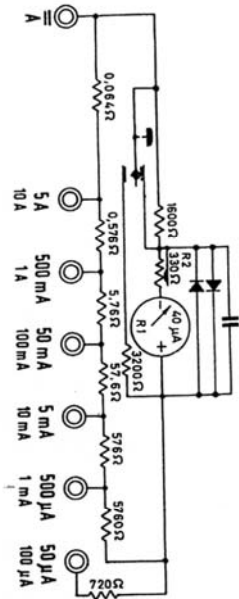
Schema Ohmetro in C.A.



Schema come misurare resistenze di alto valore per mezzo presa di rete in C.A.

27

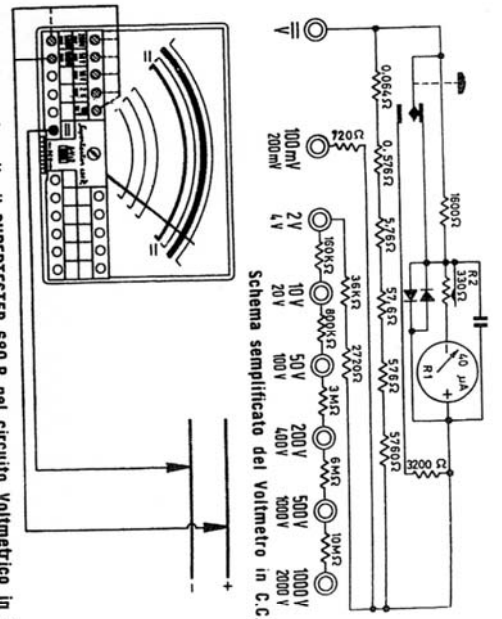
Schema semplificato Amperometro c.c.



17

10

Schema come va inserito il SUPERTESTER 680 R nel circuito Voltmetro in C.C.



Schema semplificato del Voltmetro in C.C.